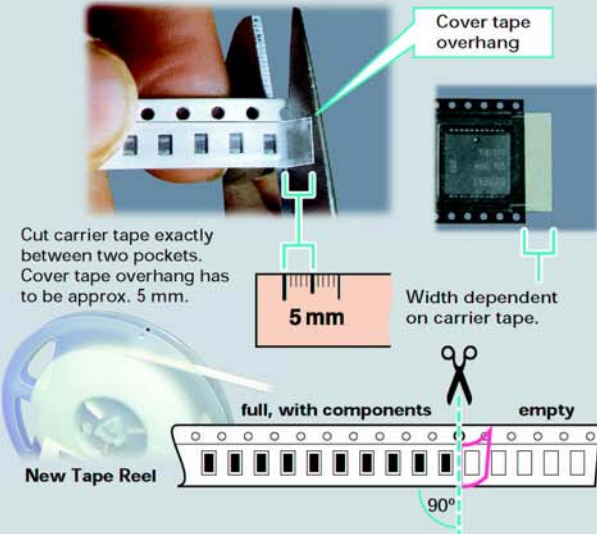


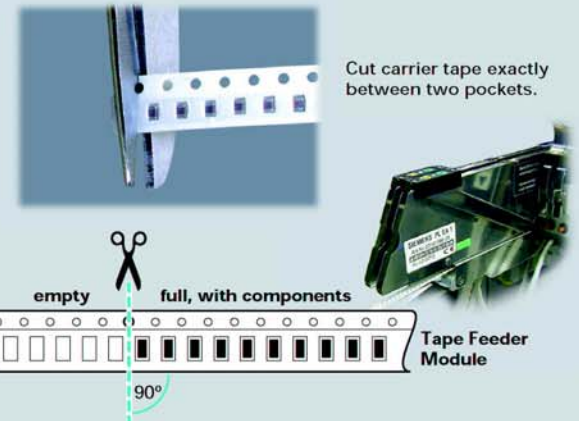
# Splicing the Carrier Tape

## A Preparation of carrier tape beginning



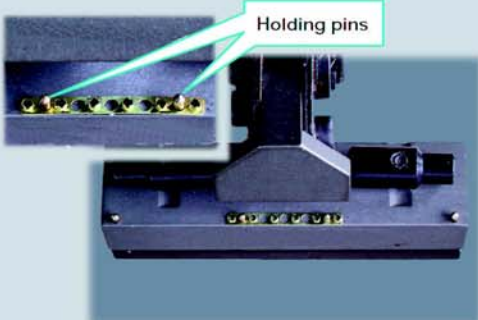
## B Preparation of carrier tape end

**Note:**  
Carrier tape splicing must occur with enough lead tape length to avoid machine stoppage during splicing.

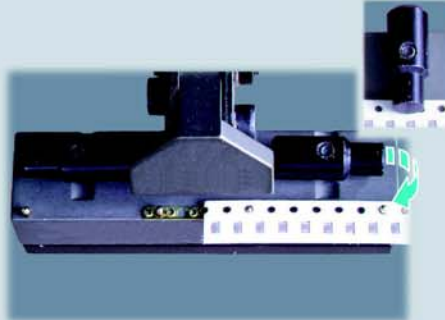


### Items required for splicing the carrier tapes:

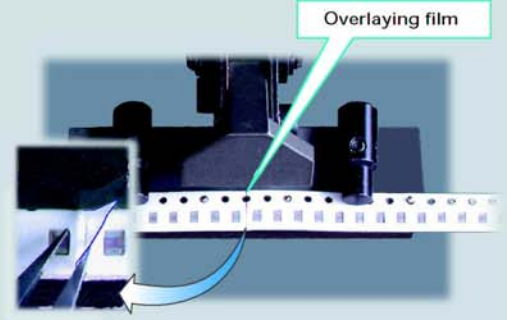
Splicing Tool 3.0001.00, Brass Shims (4000) 3.0002.00, Cover Tape Joining Strips (1000/roll or cut lengths), yellow or CLEAR, 3.0749.00 for 8mm, 3.0712.00 12mm, 3.0716.00 16mm, 3.0724.00 24mm, Tape Cutters 4.3 (through sprocket holes), 4.4 (between holes). Other Splicing Systems available



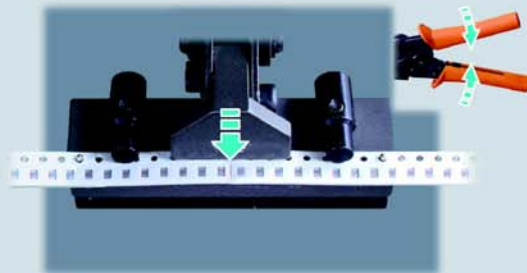
**1** Place the splice strip on the holding pins, prongs facing up!



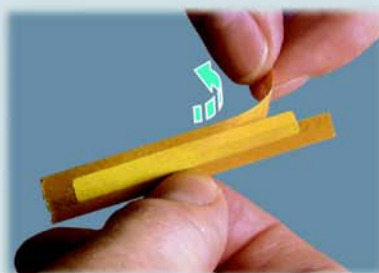
**2** Place the end of the carrier tape over half of the splice strip and close the lock.



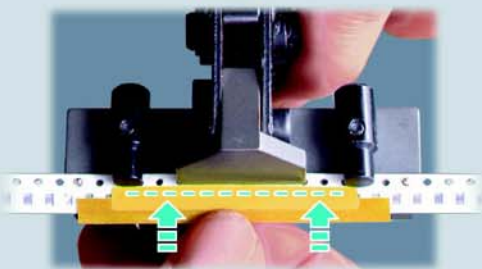
**3** Place beginning of the carrier tape over the other half of the splice strip and lock it in place. The cover tape must lay on top of the end of the old carrier tape.



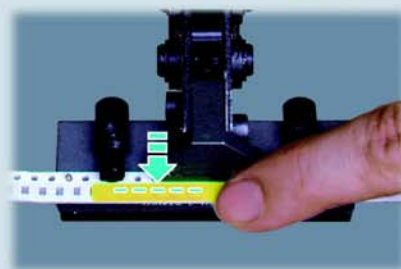
**4** Crimp the splicing tool to the third set point.



**5** Remove half of the adhesive protector. **!Do not touch the sticky surface!**



**6** Lay the adhesive strip on top of the carrier tape and press firmly.



**7** Carefully remove the second half of the protector strip and **press firmly** on the adhesive strip.



**8** To splice the tape, squeeze the splicing tool until it releases.